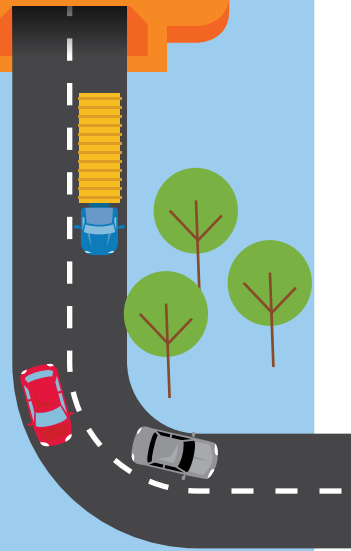




Sydney Gateway

Managing environmental impacts



We are moving forward with planning for Sydney Gateway—a new toll-free connection from the Sydney motorway network at St Peters Interchange to Sydney Airport and beyond. It will make journeys from the west and south-west to Sydney Airport, the M5 and the Eastern Distributor easier, faster and safer.

Thank you for your feedback so far on Sydney Gateway. We understand you have an interest in how contamination and waste will be managed when we start construction.

We are continuing to work with environmental experts, Inner West Council and our construction advisors to manage existing contamination within our construction sites and to minimise the volume of waste and spoil generated by the project.

This fact sheet presents information on:

- how we plan to work in the former Tempe landfill and reduce impacts
- how we plan to manage waste
- how we will manage potential odour.



Interactive portal

Visit our new interactive portal to explore Sydney Gateway, read the combined EIS and preliminary draft MDP or make a submission: rms.nsw.gov.au/sydneygatewayportal

Make a submission on our combined EIS and preliminary draft MDP

Sydney Gateway passes through both Sydney Airport land, owned by the Commonwealth, and State land under the jurisdiction of the NSW Government.

As a result the project requires two planning approvals to move forward:

- NSW Government approval, which requires the exhibition of an EIS; and
- Australian Commonwealth approval, which requires the exhibition of a preliminary draft MDP.

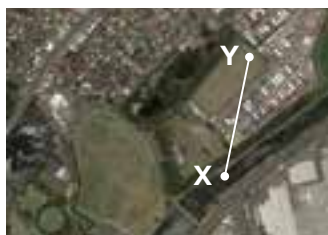
You can make submissions about the proposed project under the NSW or Commonwealth planning process, or both.

The EIS will be on exhibition from Wednesday 20 November until Thursday 19 December 2019.

Submissions must be received by DPIE www.planningportal.nsw.gov.au/major-projects/projects/on-exhibition.

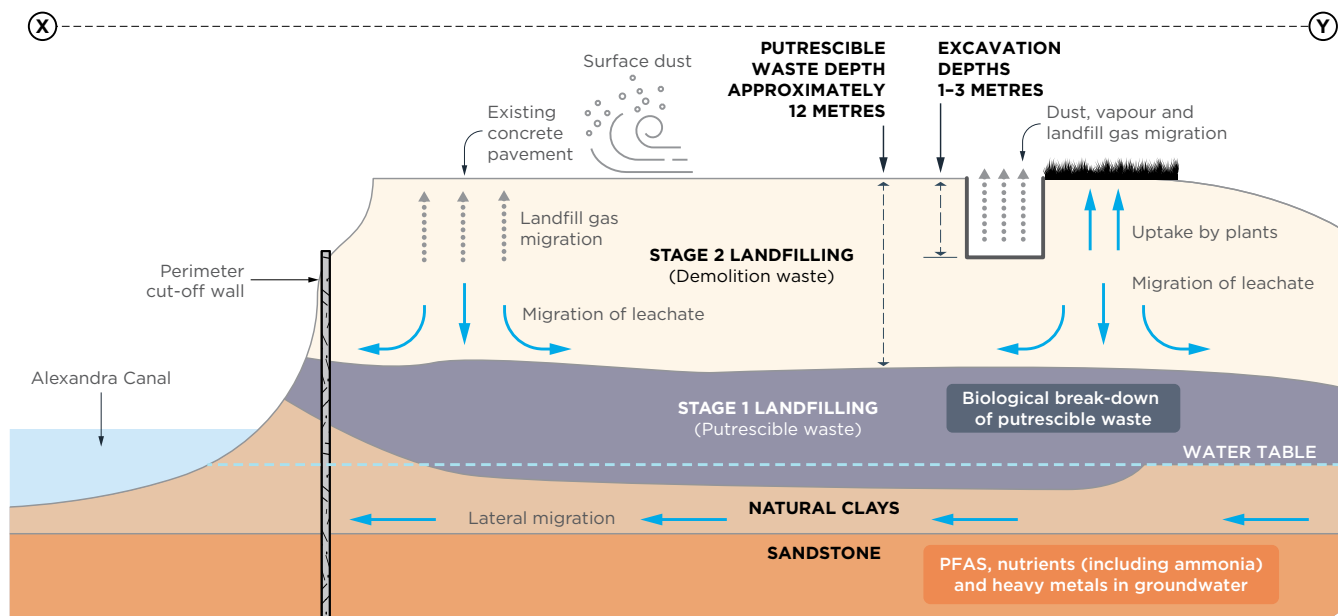
The preliminary draft MDP will be on exhibition from Wednesday 20 November until Friday 21 February 2020.

Submissions must be received by Sydney Airport Corporation www.sydneyairport.com.au/sydneygateway.



X - Y CSM Cross Section Layer

TEMPE LANDS FORMER LANDFILL SITE



Our assessments

As part of our studies, we assessed how contamination and waste will be managed at all work areas. We have proposed a range of mitigation measures to effectively manage the potential impact of contamination and waste.

The former Tempe landfill site on Tempe Lands

Located near Bellevue Street on Tempe Lands, the site of the former Tempe landfill is over 80 years old and was once used as landfill for clay quarries that supplied brick kilns in St Peters. Since the site caught fire in 1988, it has been carefully managed, and redeveloped into a business area.

We have designed the project to minimise excavation at this site. Due to the age of the former landfill, it is expected the majority of waste has degraded.

Protecting our environment when working in Tempe Lands

To build Sydney Gateway, we need to excavate to a depth of around 1-3 metres under the ground of the former landfill.

Landfill capping has been used at the site since 2005 to form a barrier that protects contaminated contents from being exposed. When material is removed from the site, it will be carefully managed and re-capped after construction is complete.

During construction, the operation of a new water management system within the former Tempe landfill will prevent contaminated water leaving the site.

Our approach to waste management

We understand the importance of safely managing and disposing of waste material.

We will be developing a Construction Waste Management Plan that will explain waste types and volumes, and how waste will be managed including spoil haulage and disposal.

Managing material removed from Tempe Lands

We will need to excavate parts of the capping layer and waste material from the former landfill. Any contaminated material disturbed during excavation will be managed in accordance with the EPA's *Environmental Guidelines: Solid Waste Landfills 2016* and Sydney Gateway's approval conditions.

How we will manage odour

Our work at the former Tempe landfill has the potential to generate odour, so we will have adequate odour control measures in place during construction.

We have engaged the Waste Asset Management Corporation (WAMC) to advise on the best way to manage potential odour issues that could arise. WAMC is part of Property NSW and manage closed landfill sites on behalf of the NSW Government.

When the cap is removed, landfill gases that have collected in the tip will escape. These include carbon dioxide, methane and potentially odorous gases. The amount of gas escape will be reduced by limiting the amount of cap that is excavated and by ensuring the underlying waste materials are re-covered as quickly as possible. Excavated landfill materials stored on-site will also be covered as quickly as possible to reduce potential odour emissions.

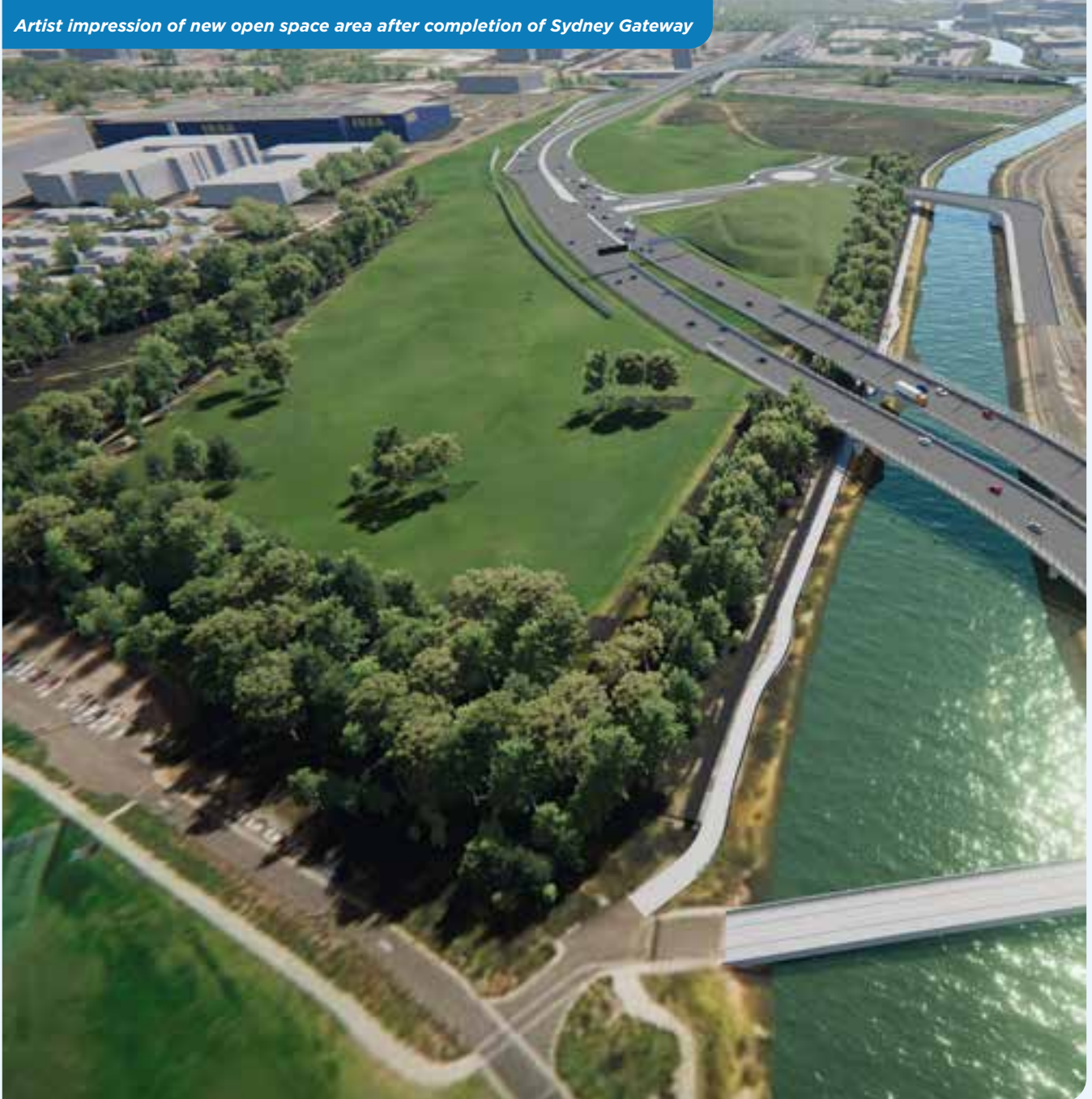
People in nearby areas may notice odours under the right conditions (e.g. wind direction). Odour spray/neutraliser systems will be installed on-site near proposed work areas for use if required. The NSW Environment Protection Agency supports this approach.

Odour issues for the Sydney Gateway road project are expected to be significantly less than they were at the St Peters tip. This is because the work at St Peters tip involved the excavation and exposure of much larger quantities of waste and significant volumes of putrescible waste.

Sydney Gateway will not impact Tempe Wetlands



Artist impression of new open space area after completion of Sydney Gateway




Contact the Sydney Gateway team

 rms.nsw.gov.au/sydneygatewayportal

 rms.nsw.gov.au/sydneygateway

 sydneygateway@rms.nsw.gov.au

 1800 654 446

 Sydney Gateway Project,
Roads and Maritime Services
Locked Bag 928,
North Sydney NSW 2059



131 450

If you need help understanding this information, please contact the Translating and Interpreting Service on 131 450 and ask them to call us on 1800 654 446.

Privacy. Roads and Maritime Services ("we") are collecting your personal information in connection with the Sydney Gateway ("the Project"). In addition to collecting your name and contact details we may collect other information such as your submissions and other communications with us. We will retain and use this information for consultation purposes, including communications and analysis in connection with the Project. We will **not** disclose your personal information to third parties unless authorised by law and if we include your submissions in any public report we will not identify you. Providing your personal information is voluntary but if you do not provide it we may not include you on our stakeholder database and you might miss further consultation opportunities. Your personal information will be held by us and you can contact us to access or correct it. Please write to us at either sydneygateway@rms.nsw.gov.au or Roads and Maritime Services, Locked bag 928, North Sydney NSW 2059.